

SERVING THIS SUNDAY

Flowers: Andi Mallincrodt
Coffee Hour: Anne Van der Staay
Usher: Danny Alegria
Altar Guild: Mary Soubirous
Acolyte/Chalicer: Louise Delafield
Lesson: Vinie Miller
Epistle: Casey McKibben
Intercessions: Betsy Alexander

HAPPENING THIS WEEK

Tues thru Fri- Morning Prayer
[on Zoom](#) and streamed on [FB](#)

Sunday, May 21
9 a.m. Vestry Meeting
NO SUNDAY SCHOOL
10 a.m. Service

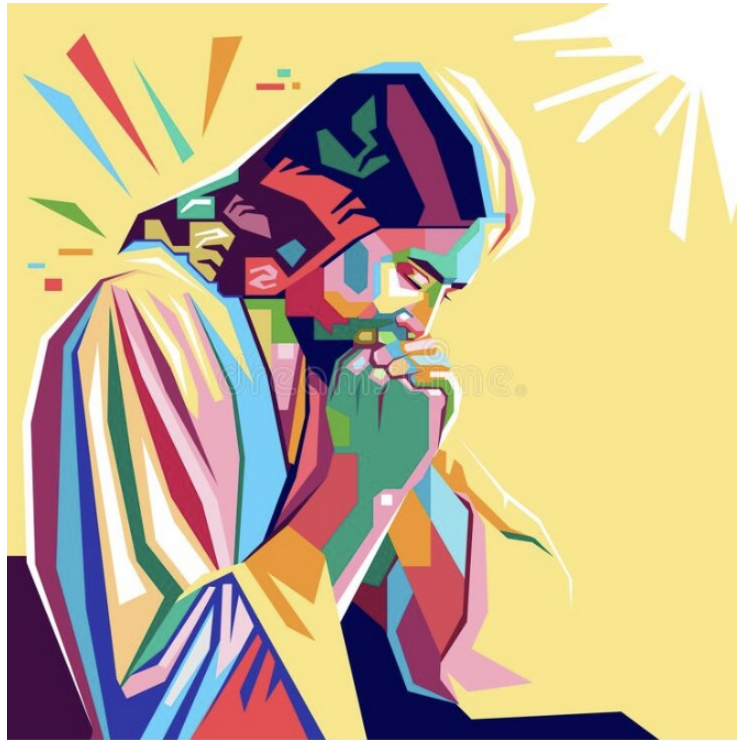
Wednesday, May 24
10 a.m. Women's Spirituality Group

Thursday, May 25
Vital & Thriving Happy Hour in Parish Hall

CELEBRATIONS THIS WEEK

Birthdays
John Mashey, Andy Hill, Noel Fenton, Greg Hintz, Jim Raitt

Anniversaries
Mark & Maria Geenen, Winston & Sarah Crawford



[Click Here for Bulletin/Order of Service](#)

[CLICK HERE to join on Zoom](#)

[CLICK HERE to watch on YouTube](#)



A NOTE FROM THE RECTOR

Dear Christ Church Family and Friends:

Yesterday was the day the church celebrates the Ascension. It is the day Jesus ascended to heaven, after appearing to several people here on earth after he was crucified. The revered poet and Oxford Professor, Malcom Guide, wrote this poem titles Ascension:

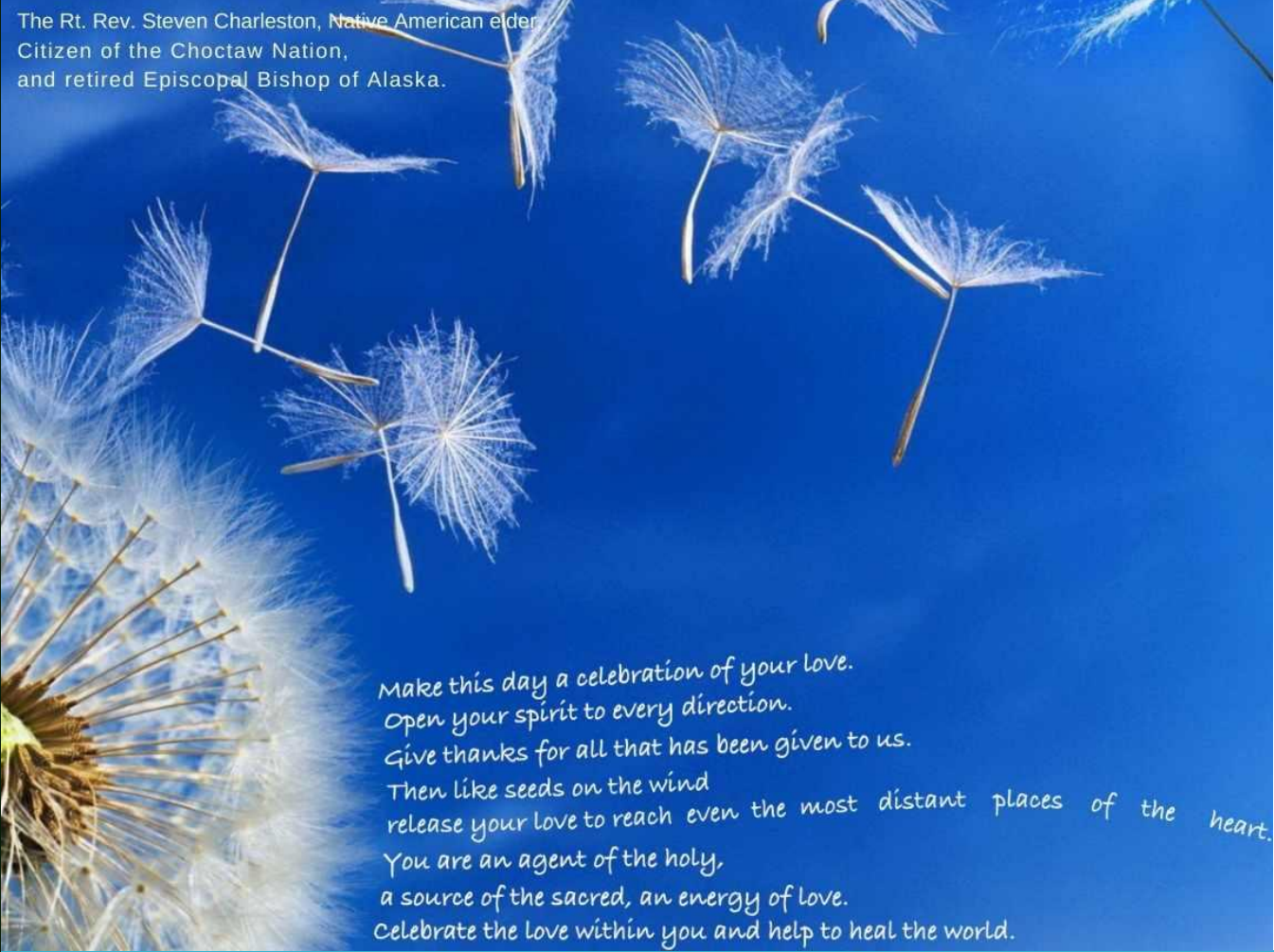
We saw his light break through the cloud of glory

Whilst we were rooted still in time and place
As earth became a part of Heaven's story
And heaven opened to his human face.
We saw him go and yet we were not parted
He took us with him to the heart of things
The heart that broke for all the broken-hearted
Is whole and Heaven-centred now, and sings,
Sings in the strength that rises out of weakness,
Sings through the clouds that veil him from our sight,
Whilst we our selves become his clouds of witness
And sing the waning darkness into light,
His light in us, and ours in him concealed,
Which all creation waits to see revealed .

God bless,
Beth

Spiritual Quote

The Rt. Rev. Steven Charleston, Native American elder,
Citizen of the Choctaw Nation,
and retired Episcopal Bishop of Alaska.



*Make this day a celebration of your love.
Open your spirit to every direction.
Give thanks for all that has been given to us.
Then like seeds on the wind
release your love to reach even the most distant places of the heart.
You are an agent of the holy,
a source of the sacred, an energy of love.
Celebrate the love within you and help to heal the world.*

SAVE THE DATES!



Saturday, May 20, Cars & Coffee in Christ Church Parking lot

VITAL + THRIVING



Join us for some fun, fellowship, and Q&A!

V+T HAPPY HOUR

Thursday, May 25
6:00 to 8 pm
Parish Hall Patio

Join us as we celebrate our parish's 6 months in
Vital and Thriving
and
answer questions about
the work ahead.

Click here to send your RSVP email to Tricia Christensen: triciahc@yahoo.com.

QUESTIONS?

Please feel free to reach out to: Tricia Christensen (triciahc@yahoo.com) &/or Diane Leonard (dianepleonard@gmail.com).

You can also learn more about V+T here: <https://www.vitalthriving.org/>.

With gratitude for your support,

Tricia Christensen & Diane Leonard, along with Daniel Hill, Paul Lovoi,
Carol Wentworth, Carl Cheney, Mary Hufty, Lenore Lovoi & Wendy McAdam

YOUR V+T Team





Flowers & Cards for Silver Oaks Memory Care - During coffee hour, we will make cheerful spring flower bouquets for every room at Silver Oaks. And for those of you who missed it last week, we still have Mother's Day cards for you to sign. But we still need volunteers to visit in person plus deliver the cards & flowers. If you can sing, read or have a moment to hold a senior's hand, contact Angela at amhey@heymash.com or 650-796-2377 to volunteer on Sunday May 21st at 1:30PM. SpiritCare provides spiritual and emotional support for "forgotten" elderly and disabled residents at over 60 care centers in the Bay Area. Christ Church has partnered in this important ministry with Silver Oaks in Menlo Park which supports 46 seniors suffering from memory issues.

Spring Linen Drive for San Mateo County Homeless Families Wrapping Up: The spring linen drive runs during April/early May and provides all the needed linens for four Life Moves Family Shelters (87 families) in San Mateo County. That's a lot of linens!! It is 60% more than was needed in the Fall of 2022. Imagine 310 pillows or 127 twin blankets. Fortunately, thanks to a grant from the Episcopal Impact Fund, the support of the Outreach Committee and many others the linen drive is mostly funded.

Deliveries of linens are wrapping up. This week we delivered another mini van full of linens. That is 11 minivans, trucks or SUVs stuffed with linens!!!

- **Redwood Family House** (Redwood City): On Wednesday April 12th a minivan of linens were delivered to the 10 family Redwood Family House shelter with a few last items dropped off on Friday April 21st.
- **Family Crossroads** (Daly City): On Friday April 28th a topped out minivan of linens was delivered to the 15 family Family Crossroads shelter. Thank heaven for side-view mirrors!
- **Haven House** (Menlo Park): Two minivans of linens and a truck load of pillows were delivered to this 23 family shelter on Monday May 1st with a final delivery on Monday May 8th. This shelter also serves homeless veteran families.
- **First Step for Families** (San Mateo): On Wednesday May 10th four large vehicles (2 trucks, a minivan and an SUV) headed to the beautiful craftsman style shelter in San Mateo, all packed with linens. Two more minivans of linens were delivered on May 11th and May 15th. Those linens will be used by the 39 families staying at the FSFF shelter in San Mateo. One of the FSFF families is headed by Alana, a baker and the mother of three young children, who helped us unload all the linens.

The Life Moves families use the linens while staying at the family shelter then take them with them as they set up permanent housekeeping. Think of the linens as a hope chest for these families as they settle into permanent homes. It helps ensure they are successful and 74% of people who move into permanent housing after staying in a Life Moves shelter are still housed a year later; the rate for families is much higher. Questions contact Kathy Kennedy at kennedyiti@aol.com or 650-291-9678.

The Life Moves families use the linens while staying at the family shelter then take them with them as they set up permanent housekeeping. Think of the linens as a hope chest for these families as they settle into permanent homes. It helps ensure they are successful and 74% of people who move into permanent housing after staying in a Life Moves shelter are still housed a year later; the rate for families is much higher. Questions or to volunteer, contact Kathy Kennedy at kennedyiti@aol.com or 650-291-9678.

Our sincere thanks to Nicole Sprague who “received” linen deliveries from a fleet of UPS and FedEx trucks, often several times a day. Our gratitude to volunteer linen boxers and deliverers which includes Betsy Alexander, Tricia Christensen, Claiborne Jones, Kathy Kennedy, Dave Miller, Erin Miller, Mary Paine, Mary Soubirous, Ross Soubirous, Carol Wentworth, Bob Wrucke and RuthAnn Wrucke. In addition to the generous grants from the Episcopal Impact Fund and the Christ Church Outreach Committee, there were also many individual donors including: Betsy Alexander, Melissa Anderson, the students of Avenues Silicon Valley School including Josie and Katie Miller, J&B Beekley, Norma Cance, Crystal Ciancutti, Tricia Christensen, Claiborne Jones, Pam Kaufman, Kathy Kennedy, Larry Kroger, Diane Leonard, Eda Lim, Judy Massey, Denise Moriarty, Pam Padilla, Ross Stores, Target Stores, Hwa Tsao, Lauren Wittine, Maggie Wilde and many Christ Church congregants who helped “tie” colorful fleece blankets.

Last week the Christ Church community, the Episcopal Impact Fund, the Outreach Committee and the broader Portola Valley, Ladera and Kings Mountain communities who participated in this linen drive received this note of thanks from Life Moves' Lynnelle Bilsey:

Love, love, love the photos!! Thanks for sharing and so nice to see these items arriving at First Step, and Haven Family House. I happened to have a meeting at Haven Family House yesterday and saw the amazing donations – Evelyn Reyes our Program Director at this site was so excited to receive your fantastic gift for our families. I also spoke this week with Rebecca Hernandez who is the Program Director for Redwood Family House and Family Crossroads and she was equally enthusiastic 😊

Truly amazing ladies – love the energy, the church's generosity and phenomenal support you all at CC-PVW have shared with our shelters over the past couple weeks. The staff are overwhelmed and overjoyed with your gifts and are so excited to share with our families in need.

Thank you all and everyone at Christ Church,

Lynnelle

*Lynnelle Bilsey, M.A., CVA
Senior Manager, Volunteer Programs*

A Birthday Celebration with Burlingame Skilled Nursing residents-On Thursday June 15th, at 10AM volunteers are needed for an hour long birthday celebration with residents of Burlingame Long Term Care. Burlingame Skilled Nursing is home to 170 disabled residents, most of whom have no family support. It is one of the neediest of the 60 care homes supported by SpiritCare in their mission to provide spiritual and emotional support to forgotten seniors. Under the guidance of the effervescent and creative Pam Kaufman this birthday party will be a fun-filled morning; all we need is you to put on your party hat and join in. Questions or to volunteer contact Pam Kaufman at pamkaufmann@gmail.com or 619-885-0885.

Dinner for Coast House Shelter -On Sunday May 7th the Christ Church community hosted a wonderful Ham or Meatloaf dinner for the 55 residents of the Coast House Shelter in Half Moon Bay. In addition to the main course, scalloped potatoes, roasted vegetables, green salad, papaya & pineapple were served along with chocolate bars for dessert. Our thanks to volunteers Liz Laderman (vegetable roaster), Katie & Josie Miller plus a school friend, Carol Wentworth (dessert baker) and Ruth Ann Wrucke

Coast House is one of the newest of the Life Moves shelters and houses adults, couples, plus a few families in a converted Coastside motel irregardless of immigration status. If you would like to help make a meal in June, contact Ruth Ann Wrucke at 650-851-8435. **UPDATE:** Last week the San Mateo County Board of Supervisors approved \$1 million for “planning and project management” for the future construction of 45 - 50 low-income housing for farm workers in the HMB area. They still need \$5 million in state funds to cover the actual construction costs for the units. This action comes as a result of the January mass-shooting deaths of 7 farmworkers; an

action that revealed the “deplorable” living conditions of agricultural workers in Half Moon Bay. Approximately 2000 farmworkers live in the Half Moon Bay Area says Joaquin Jimenez, vice mayor of Half Moon Bay, and “at least half of them need better housing.”

30 Hand-Made Blankets for Homeless Kids -We did it! We made 30 cozy and colorful hand-tied blankets for homeless kids staying in Life Moves 4 family shelters in San Mateo County. Five each were delivered to Redwood Family Shelter (Redwood City) and Family Crossroads Shelter (Daly City) and ten each were delivered to the larger Haven Family House shelter (Menlo Park) and First Step for Families (San Mateo). “Thank heaven!” said one woman working at FSFF “We will give them to the babies.” Kids are particularly traumatized by the chaos of homelessness and a warm cozy blanket of their own provides a lot of comfort. Our thanks to Sara Atkins, Penny Atkins, Juliet Atkins, Norma Cance, Dedie Evanger, Kathy Kennedy, Judy Massey, Erin Miller, Katie & Josie Miller, Cindy & Missy McAdam who helped prepare the blankets for tying. Our thanks to our entire congregation who helped “knot” the blankets during coffee hour. And special thanks to 13 volunteer teens at the Avenues Silicon Valley high school who completed 20 tied blankets which have been delivered to Haven House and FSFF. Wow, just wow!

Save the Date for Rise Against Hunger: On **Saturday September 30th** the Christ Church Community will again assemble 75,000 meals in TWO HOURS. Our 15,000 food kits (each holds 5 meals) will be sent to the hungry worldwide. We will even feed you lunch afterwards. To make it work we need you, your kids, your relatives, friends, neighbors and co-workers. Everyone! **Rise Against Hunger** is an international hunger relief non-profit that coordinates the packaging and distribution of food and other aid to people in developing nations. In 2022 Rise Against Hunger distributed 67.6 million meals to over 4 million people in Central America, Asia and Africa. Questions, contact Mary Soubirous.

Life Moves Benefit Breakfast -The in-person breakfast was held on Thursday April 27th with 600+ in attendance including a strong Christ Church delegation. The keynote speaker was **Liz Murray**, from the Bronx, who discussed her journey from homelessness to Harvard. Liz’s loving parents were drug addicted and died of AIDS due to sharing needles. Liz and her sister Anna were both born addicted to cocaine. Liz grew up seldom knowing where her next meal would come from (some days she ate ice cubes) and ended up homeless at 15. She recalled the first night she slept on the overnight train. She still managed to go to the hospital regularly where her mother was dying of AIDS. Fortunately when she was 16 she met Perry, a teacher at Humanities Preparatory Academy (HPA) who never gave up on her and wouldn’t let her give up on herself. She told him everything but never could confess she was homeless; he must have suspected because he hooked her up with a shelter for teens where she had a hot meal every day at 5:30. She completed high school in two years with a 4.1 average. She applied for a New York Times scholarship, wrote a short essay about the adversities she overcame and it was published in the Metro section of the Times. She won the scholarship and NYT readers responded with clothes, rent money and a check for the electricity. One lady did her laundry every week. Perry took Liz and other kids from HPA to Boston where she first saw Harvard, applied and was accepted. “Perry mentored me when I looked like an alley cat” explained Liz, “because someone mentored him. I learned that nobody makes it on their own.” A Lifetime movie was made based on Liz’s memoir Homeless to Harvard: the Liz Murray Story.

The Redwood City Navigation Center Ribbon Cutting -On Tuesday April 18th the San Mateo County Navigation Center opened in Redwood City. Clients started moving in on May 10th. The center, which replaces the 100 bed Maple Street Shelter, offers 240 temporary living spaces on 2.5 acres and is sited just east of Highway 101 in Redwood City. The center includes 168 units sized at 200 square feet with in-unit bathrooms, along with 72 smaller units with access to communal bathrooms. The center offers several other common areas, including a commercial kitchen, medical and dental clinics, laundry and storage facilities, a barbecue area, a dog run, and a basketball court. Case managers will work with clients to receive the services they need, from trauma counseling and substance use treatment to on-site health care and other resources. LifeMoves will operate the center for at least the next five years. Outreach hopes to organize a tour of the new center shortly. For more information see https://patch.com/california/redwoodcity-woodside/smc-navigation-center-officially-opens-redwood-city?utm_term=article-slot-1&utm_source=newsletter-daily&utm_medium=email&utm_campaign=newsletter&user_email=05ca8fc6a1ecb5d6d93c8a22e04fb330d21d3253751bc490227ce77f3d4eef3f

Seeking Hotel-sized Toiletries: Are you on vacation or going on one soon? If you picked up any travel size shampoo, conditioner, soap or lotion during your last hotel stay, you can donate them for use at Coast House. Bring them to the box in the breezeway. And if you have a toothbrush or toothpaste your dentist gave you on your last visit that you have no use for, they could use that too. Coast House is located in Half Moon Bay and provides housing for 60 coastside homeless adults, couples and a few families each night. Life Moves is also providing support for local farm workers from that site. Donated items best used by families or children (diapers, children's toothpaste, etc) will be delivered to Redwood Family Shelter in Redwood City which provides housing for 10 families each night.

Seeking Hotel-sized Toiletries: Are you on vacation or going on one soon? If you picked up any travel size shampoo, conditioner, soap or lotion during your last hotel stay, you can donate them for use at Coast House. Bring them to the box in the breezeway. And if you have a toothbrush or toothpaste your dentist gave you on your last visit that you have no use for, they could use that too. Coast House is located in Half Moon Bay and provides housing for 60 coastside homeless adults, couples and a few families each night. Life Moves is also providing support for local farm workers from that site. Donated items best used by families or children (diapers, children's toothpaste, etc) will be delivered to Redwood Family Shelter in Redwood City which provides housing for 10 families each night.

Zoom Outreach Meeting: On Tuesday May 9th the Outreach committee conducted out biennial charitable organization review with both Rise Against Hunger and SpiritCare.

- **Rise Against Hunger:** RAH's mission is to create a global movement to end hunger worldwide. In 2022 they served 67.6 million meals to 4.4 million people in 38 countries. 42.5 million go those meals were distributed to children and families facing food insecurity. Many of the meals are served through schools to promote education. School attendance increased 35% with feeding programs. In 2022 176,000 volunteers participated. The organization also teaches sustainable farming practices to empower people to become self-sustaining. They battle the 3 C's that drive famine: 1) Climate change 2) Conflict 3) COVID. The organization is celebrating its 25th anniversary in 2023.

- **SpiritCare:** SpiritCare's serves the spiritual and emotional needs of the elderly and disabled residents at over 60 long-term care centers and convalescent centers in the SF Bay Area. SpiritCare Ministry to Seniors pastors and volunteers provide programs for the frail elderly in three ways: (1) pastors and volunteers visit care homes monthly, providing worship services and spiritual support to people of all faiths (2) individuals or families visit seniors, making hand-made quilts, taking a friendly pet or chatting one-on-one (3) groups visit seniors in residential care facilities, offering entertainment and activities. SpiritCare's President/Board Chair is Christ Church's Angela Hey and congregant Pam Kaufman serves on the Board.

- **Completing the Biennial Review.** On **Tuesday June 27th, 9:30** we will discuss, via Zoom, the four charities we have reviewed and vote on ongoing support. At **11:00** we will gather in-person at the Alpine Inn for a celebration of Outreach volunteers. All are welcome.



Stewardship Campaign 2023

Thank you to all who have donated! We have received 45 pledges and have raised \$348K towards our goal of \$400,000 which is the amount that our Vestry and Finance Committee have determined is needed to keep our financials in balance. We hope to receive another 40 pledges and are asking everyone to consider a 10% increase, if possible. We know that not everyone can, but we will not reach our goals without our collective effort. As a small parish, the contributions of each person is incredibly important.

You can make a payment now for the 2023 campaign or make a pledge to be paid before 12/31/2023. Please return a pledge card or if easier email your pledge to wendymcadam@mac.com or admin@ccpvw.org. For those who contribute monthly through Vanco, we cannot continue those payments in 2023 without your written or emailed permission so please let us know.

Financial Update

FINANCIAL UPDATE TO PARISH

January 1, 2023 –April 30, 2023

	Year to Date	% of Annual Budget	Annual Budget 2023
Income	\$99,869	25%	\$401,354
Expenses	\$164,640		\$417,578
Net income (deficit)	(\$64,771)		(16,224)

FINANCIAL UPDATE TO PRESCHOOL

July 1, 2022 – April 30, 2023

	Approved Annual Budget	Year to Date	% of Forecast Annual Budget	Forecast Annual Budget 2022
Income	\$364,689	\$195,696	93%	\$210,300
Expenses	\$335,259	\$202,582		\$303,275
Net income (deficit)	\$29,430	(\$6,886)		(\$92,975)

The brief financial report for the Carillon Preschool, shown above, does not show the actual fact that, because of additional enrollments this year and the hugely successful fundraiser auction on April 29th, the school has not only completely reduced their expected deficit for this year (2022-23) but will have a nice cushion left over in their account with which to start the new school year.

Christ Church Portola Valley & Woodside |
ccpvw.org
Carillon School | carillonschool.org



Christ Church | 815 Portola Road, Portola Valley, CA 94028

[Unsubscribe tech@ccpvw.org](mailto:tech@ccpvw.org)

[Constant Contact Data Notice](#)

Sent by beth@ccpvw.org powered by



Try email marketing for free today!

